



**NAbSA is a collaboration between IUCN and Global Affairs Canada** under its Partnering for Climate (P4C) initiative, created to build capacity and provide technical assistance for **gender-responsive nature-climate actions** for adaptation and resilience.

NAbSA supports **19 projects** in **30 countries**, across **12 different ecosystems**.

The project brings together a global network of organizations to **address societal and environmental challenges** due to the climate crisis, **supporting gender-responsive actions, biodiversity conservation, and international climate goals**.



# The **6** Principles

of the NAbSA Operational Framework

[NEXT](#)

[BACK](#)

[PRINCIPLES](#)

[STEPS](#)

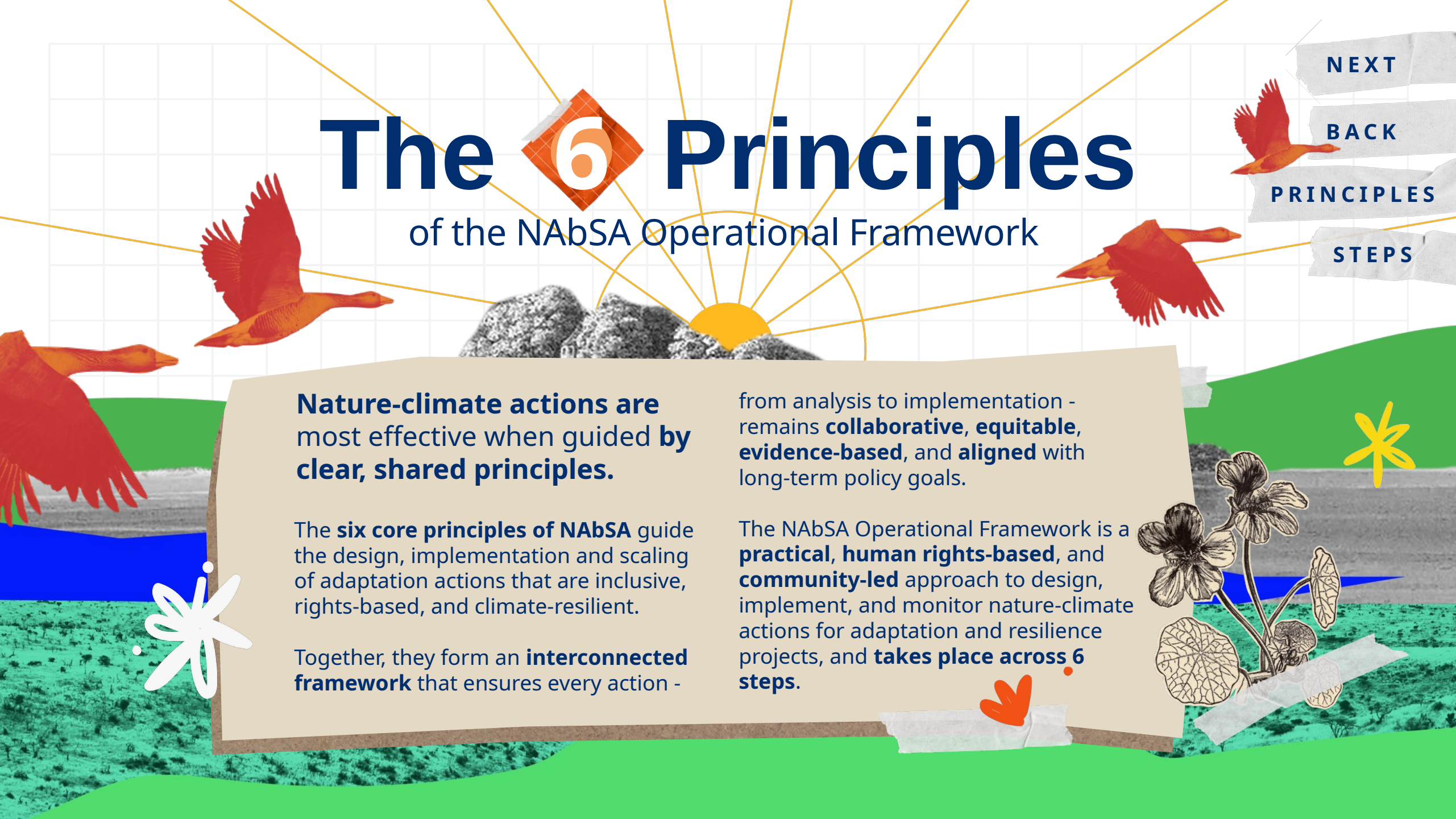
**Nature-climate actions are most effective when guided by clear, shared principles.**

The **six core principles of NAbSA** guide the design, implementation and scaling of adaptation actions that are inclusive, rights-based, and climate-resilient.

Together, they form an **interconnected framework** that ensures every action -

from analysis to implementation - remains **collaborative, equitable, evidence-based**, and **aligned** with long-term policy goals.

The NAbSA Operational Framework is a **practical, human rights-based**, and **community-led** approach to design, implement, and monitor nature-climate actions for adaptation and resilience projects, and **takes place across 6 steps**.



NEXT

BACK

STEPS

# The **6** Principles

of the NAbSA Operational Framework

Click a  
Principle to  
read more



2

Focused on the  
Nature-Climate-People  
Nexus



4

Rights-based and  
gender-responsive



6

Aligned with policy



1

Informed by  
Co-Creation



3

Guided by environmental  
and social risk analysis



5

Climate-proofed

NEXT

BACK

PRINCIPLES

# The **6** Steps Recap

The NAbSA Operational Framework is a **practical, human rights-based,** and **community-led** approach to design, implement, and monitor nature-climate actions for adaptation and resilience projects, and takes place across **6 steps**.



# 1

PRINCIPLE ONE

## Informed by Co-Creation

Nature-climate actions are co-created through **open dialogue and collaboration** among all actors.

Co-creation ensures actions are rooted in local realities, blending diverse knowledge systems to build trust, shared ownership, and lasting collective impact.

NEXT

BACK

PRINCIPLES

STEPS



# Informed by Co-Creation

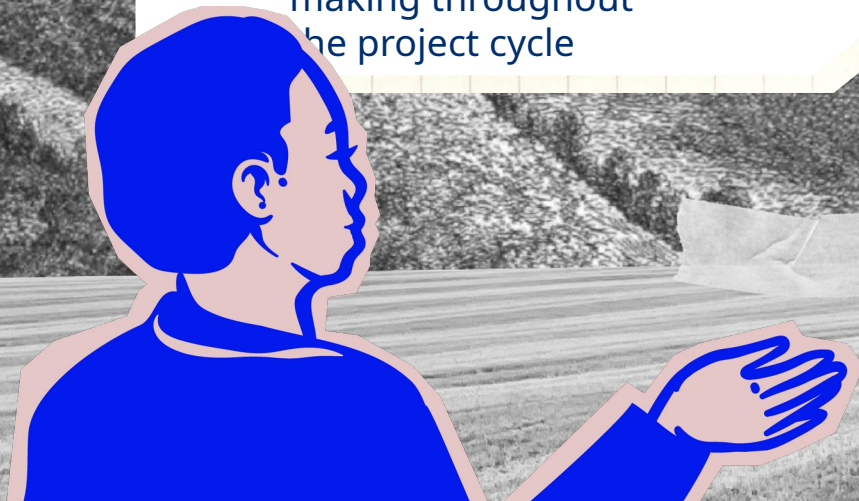
[NEXT](#)[BACK](#)[PRINCIPLES](#)[STEPS](#)

## Proposed Strategies

- **Stakeholder mapping** to identify relevant actors who should be engaged, including **women and other marginalised groups**
- Participatory **design** and selection of **interventions**
- **Internal evaluation, feedback** and **grievance** mechanisms to promote transparency and participatory decision-making throughout the project cycle

## Outcomes

- Strong partnerships built on **trust** and **accountability**
- Actions that **reflect real needs and priorities** and are more likely to succeed
- Collective **stewardship** that endures beyond individual projects



NEXT

BACK

PRINCIPLES

STEPS

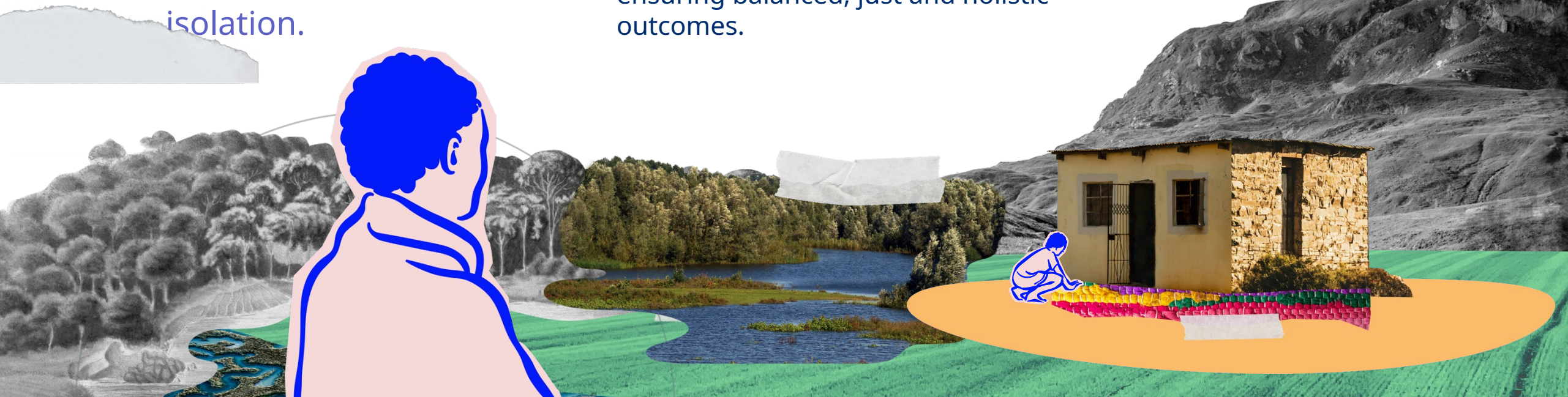
2

PRINCIPLE TWO

# Focused on the Nature–Climate–People Nexus

People, ecosystems, and climate **systems are interconnected** and cannot be considered in isolation.

Actions protect nature, strengthen resilience and improve well-being through approaches that respect cultural, social and ecological diversity, ensuring balanced, just and holistic outcomes.



# Focused on the Nature-Climate-People Nexus

NEXT

BACK

PRINCIPLES

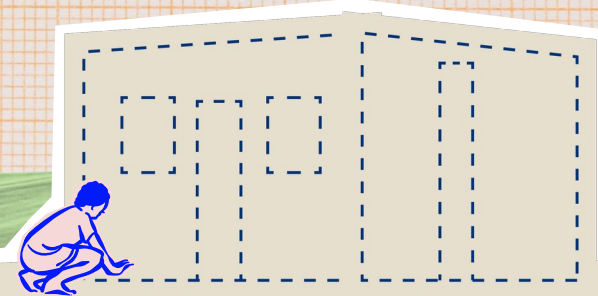
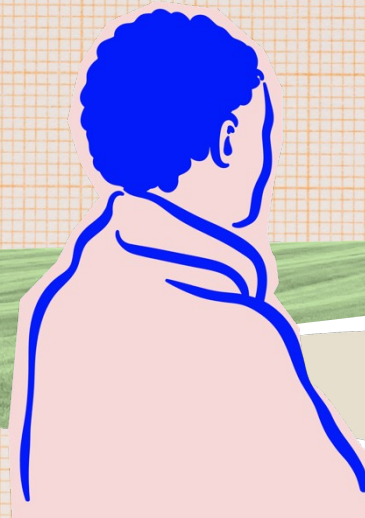
STEPS

## Proposed Strategies

- Develop a **climate impact chain** using participatory methods and local knowledge to understand changes in ecosystem services for biodiversity and communities
- Use of **non-quantitative evaluation methods** to capture full ecosystem value outside of monetary terms
- **Vulnerability assessments** to identify priority ecosystem areas and stakeholder' groups

## Outcomes

- **Holistic, just results** that sustain both people and planet
- Resilient **communities** supported by thriving **ecosystems**



# 3

## PRINCIPLE THREE

# Guided by environmental and social risk analysis

Nature-climate actions are guided by thorough **environmental, social, and cultural** risk assessments.

Safeguards and accountability measures help prevent harm and promote integrity, transparency, and inclusion.

This ensures that all actors are respected, informed, and actively engaged in responsible decision-making.

NEXT

BACK

PRINCIPLES

STEPS



# 3

## PRINCIPLE THREE

# Guided by environmental and social risk analysis

NEXT

BACK

PRINCIPLES

STEPS

### Proposed Strategies

- **Stakeholder mapping and analysis**, with attention to local power dynamics, social roles, and patterns of exclusion
- **Detailed data collection** and analysis of local ecological, climate, and socio-economic conditions, including models of future climate risks when possible
- Establish **feedback** and **grievance** mechanisms

### Outcomes

- **Reduced unintended consequences** for people and nature
- Greater **credibility and confidence** among partners and funders
- **Responsible, transparent action** that upholds environmental integrity



# 4

## PRINCIPLE FOUR

# Rights-based and gender-responsive

All nature-climate actions must uphold **human rights, inclusion and gender equality**.

By recognising and addressing systemic barriers, actions empower underrepresented groups and create equitable opportunities for both participation and leadership.

NEXT

BACK

PRINCIPLES

STEPS



# Rights-based and gender-responsive

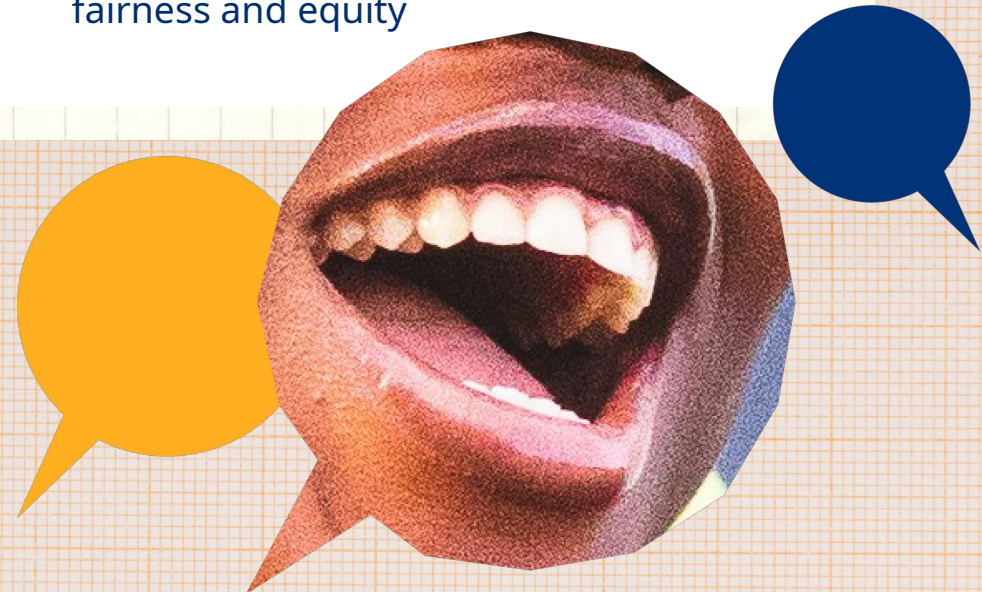
[NEXT](#)[BACK](#)[PRINCIPLES](#)[STEPS](#)

## Proposed Strategies

- Thorough stakeholder mapping and analysis to engage all relevant actors, including **women, Indigenous Peoples,** and members of other **marginalised groups**
- **Active outreach** to women, Indigenous Peoples, youth, persons with disabilities, and other groups to engage in intervention design and selection
- **Distribution of responsibilities** during implementation to ensure transparent decision-making and benefit-sharing

## Outcomes

- More **inclusive** processes and outcomes
- Strengthened **social justice and empowerment**
- Greater **long-term resilience** through fairness and equity



# 5

## PRINCIPLE FIVE

# Climate-proofed

Environmental and climate conditions evolve. Nature-climate actions are designed to **remain adaptable and effective** in this reality.

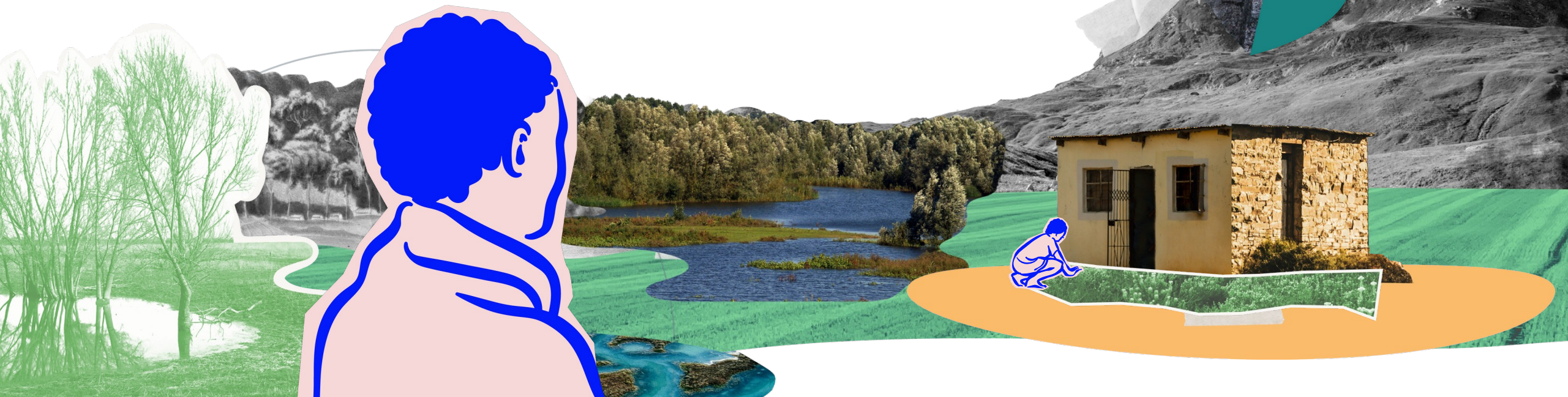
They anticipate future risks, integrate climate projections, and remain flexible as environmental realities evolve.

NEXT

BACK

PRINCIPLES

STEPS



# 5

## PRINCIPLE FIVE

# Climate-proofed

NEXT

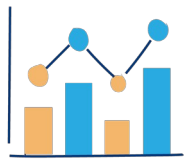
BACK

PRINCIPLES

STEPS

## Proposed Strategies

- Identification of **future climate risks** using global climate model outputs
- Regular **monitoring and evaluation checkpoints** to facilitate adaptive management



## Outcomes

- Adaptation measures that **remain relevant and effective** over time
- **Reduced vulnerability** to extreme events and shifting climates
- Stronger, more **resilient communities** and **ecosystems**



6

PRINCIPLE SIX

# Aligned with policy

Nature-climate actions align with policy frameworks at all levels to ensure **shared vision and coherence**.

This alignment strengthens coherence, accountability, along with long-term and transformative change.

NEXT

BACK

PRINCIPLES

STEPS



# Aligned with policy

## Proposed Strategies

- Policy analysis to understand the **social and political context**
- Stakeholder mapping and analysis to engage with relevant actors, including **governments, civil society, and private sector**
- **Communication plan** to keep actors informed and share key learnings

## Outcomes

- Greater **visibility and institutional support** for nature-climate actions
- Policy coherence that enables **scaling and replication**
- Durable, **system-wide change** built on shared priorities

[BACK](#)[PRINCIPLES](#)[STEPS](#)[END](#)

# An Integrated approach to lasting impact

Nature-climate actions follow six guiding principles that connect **people, climate** and **nature** at every stage.

From the start, all actors **co-create** actions to ensure shared ownership and relevance. A **rights-based, inclusive**, and **risk-aware** approach safeguards both people and nature. Each action is **climate-resilient, adaptive** and **aligned** with policies to drive coherent and transformative change.

