



WEDNESDAYS OF FINANCE

Innovative Finance for Climate,
People & Nature



**ACTIONABLE FINANCE: TURNING
INVESTMENTS INTO INCLUSIVE OUTCOMES**

May 27, 2026

3-4.00PM GMT / 9-10.00am EST

Audience Reminders

> Use Zoom chat for comments, reactions and links.

> Use Zoom Q&A to ask a question.

> Recording and slides will be shared after the webinar.

Contact us

nabsa@iucn.org

or

Subscribe!



Agenda

- 9:00-9:07 EST
SETTING THE STAGE - Zoe Jafflin, IUCN and Fernande Abanda, Inter Pares
- 9:07-9:20 EST
FINANCE 101: PAYMENTS FOR ECOSYSTEM SERVICES - Chloé L'Ecuyer-Sauvageau, CRCEE
- 9:20-9:45 EST
PANEL DISCUSSION - Chloé L'Ecuyer-Sauvageau (Moderator) and panellists
- 9:45-9:55 EST
Q&A SEGMENT
- 9:55-10:00 EST
FEEDBACK & CLOSING REMARKS - Zoe Jafflin, IUCN

Who We Are



→ Email: nabsa@iucn.org
Site web: nabsaclimate.org

Financed by:



12

Ecosystems

30

Countries

20

Projects

\$315

million CAD
portfolio

What is the Land & Natural Resource Management Task force?

One shared goal: restoring land, sustainably and equitably.

- Women's Climate Change Adaptation Project in Protected Areas in Congo and Chad (ELLESadAPT)
- Gender Transformative Climate Adaptation
- Climate Adaptation and Protected Areas (CAPA)
- Scaling Urban Nature-based Solutions for Climate Adaptation in Sub-Saharan Africa (SUNCASA)
- Locally led Indigenous Nature-based Solutions for Climate Change Adaptation in Zimbabwe (LINCZ)
- Natur'ELLES
- Women for Forests
- Nature-based climate adaptation in the Guinean forests of West Africa
- Feminist Climate Action in West Africa
- Nature Positive Food Systems
- Lake Chad Basin Conservation Project



Fernande Abanda

Chair

ACF-AO project

Inter Pares



Finance 101: Payments for ecosystem services

9:05 – 9:15 EST / 15:05 – 15:15 CET



Chloé L'Ecuyer-Sauvageau

Researcher
CRCEE



Developing sustainable and just payment for ecosystem services type programs – Application to the Femmes Pro-Forêt project

NAbSA's Wednesdays of Finance

May 27, 2026

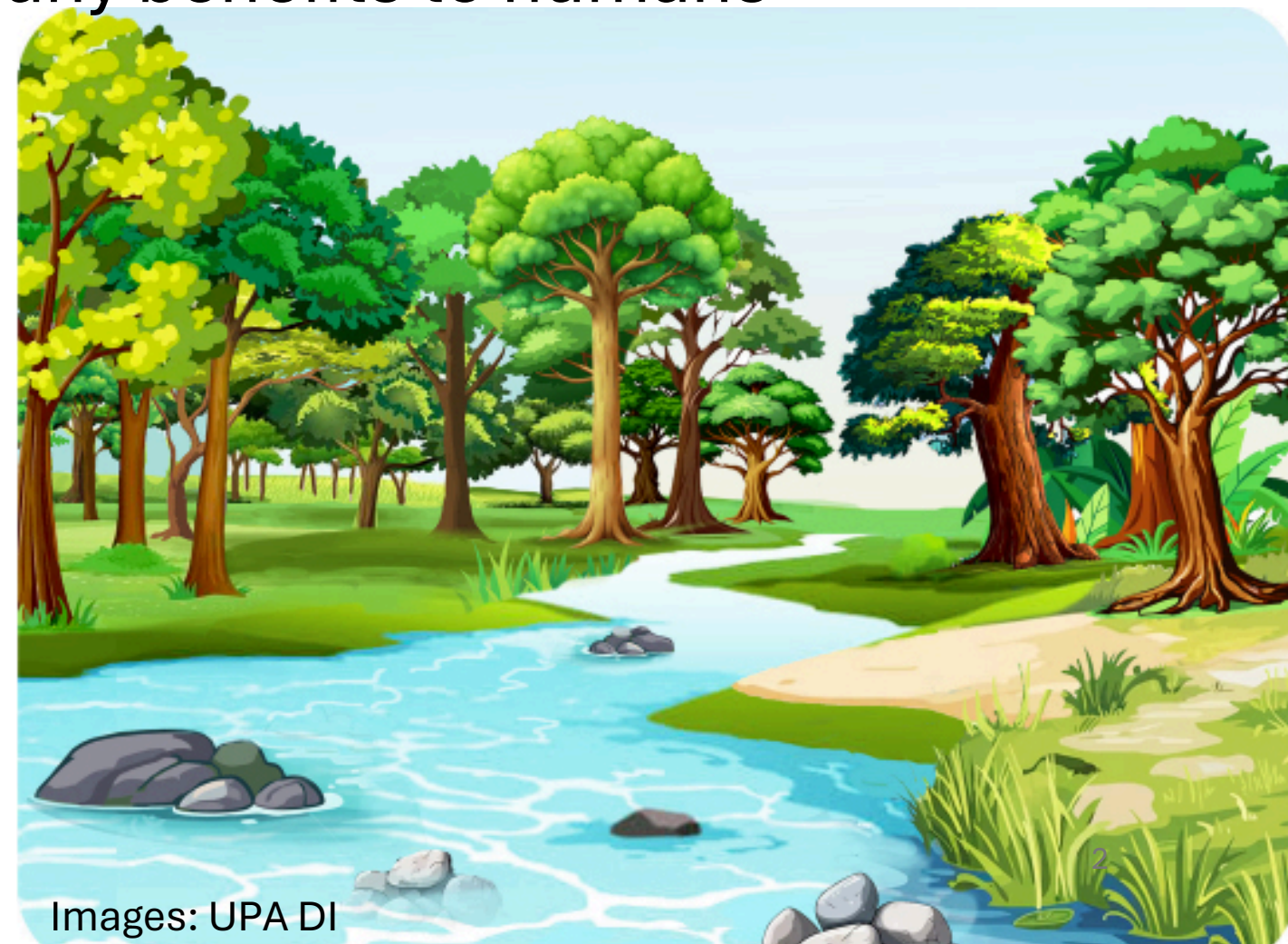
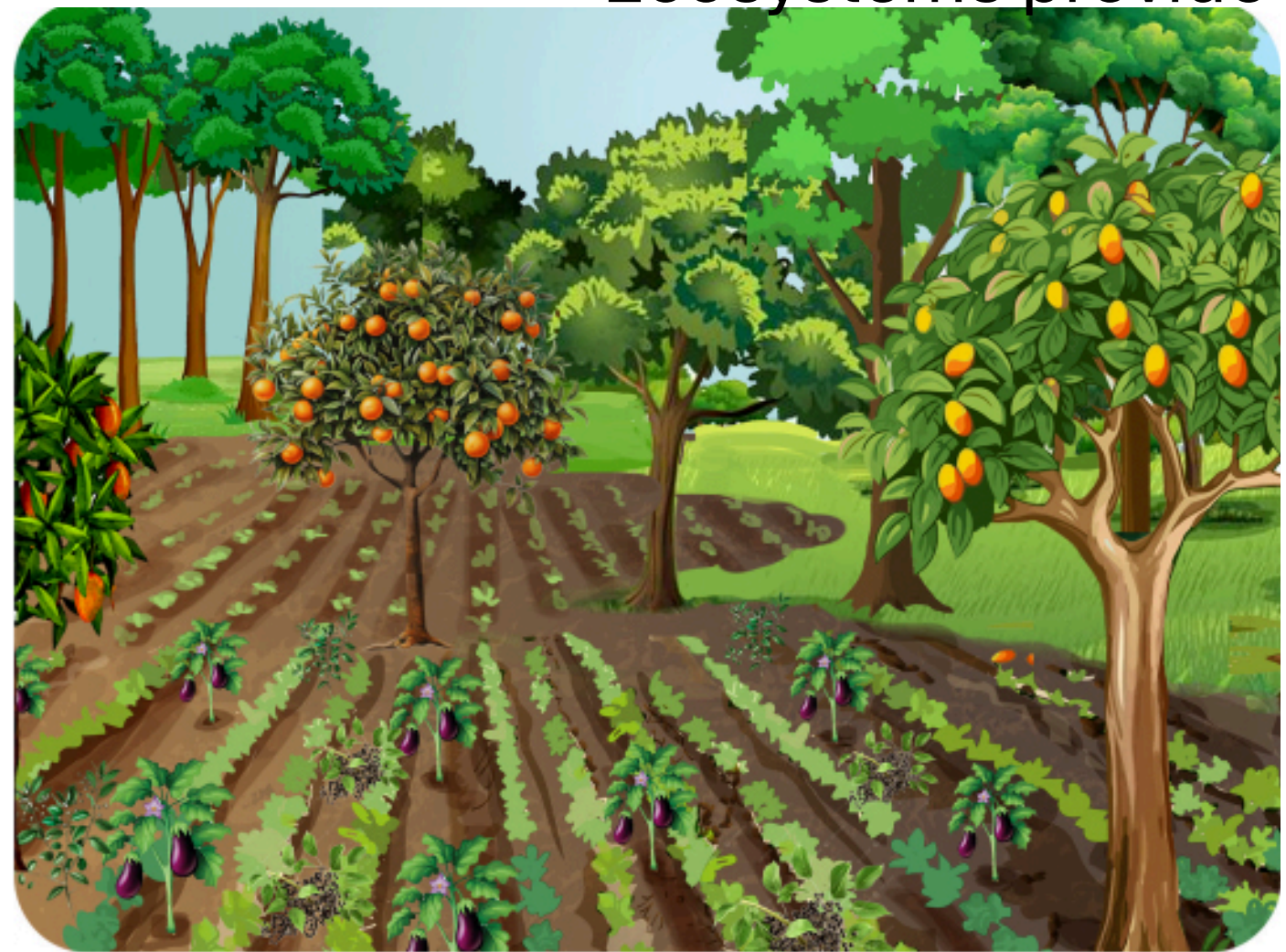
Chloé L'Ecuyer-Sauvageau, PhD

Canada Research Chair in Ecological Economics, Université du Québec en
Outaouais



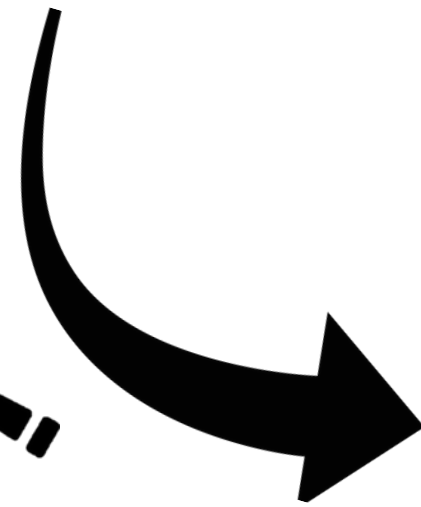
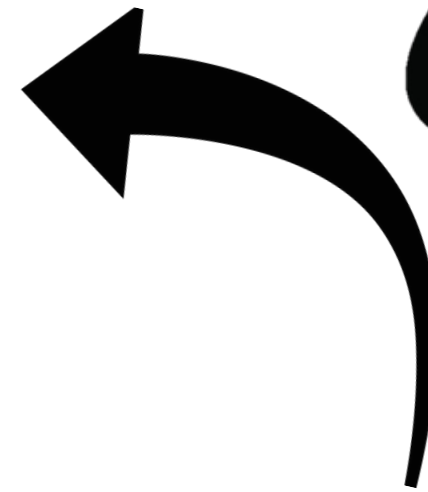


Ecosystems provide many benefits to humans



Images: UPA DI

Using complementary approaches to deal with environmental externalities



Market-based instruments for biodiversity and ecosystem services

| Category | Examples |
|--------------------------|---|
| Direct markets | Eco-tourism, sale of NTFP |
| Tradable permits | Cap-and-Trade, mitigation banking, emission quotas, voluntary carbon markets |
| Coasan-type agreements | Payment for ecosystem services , conservation easements, conservation concessions, |
| Regulatory price signals | Eco-tax, agri-environmental measures |
| Voluntary price signals | Certifications, labels, norms, standards, CSR |

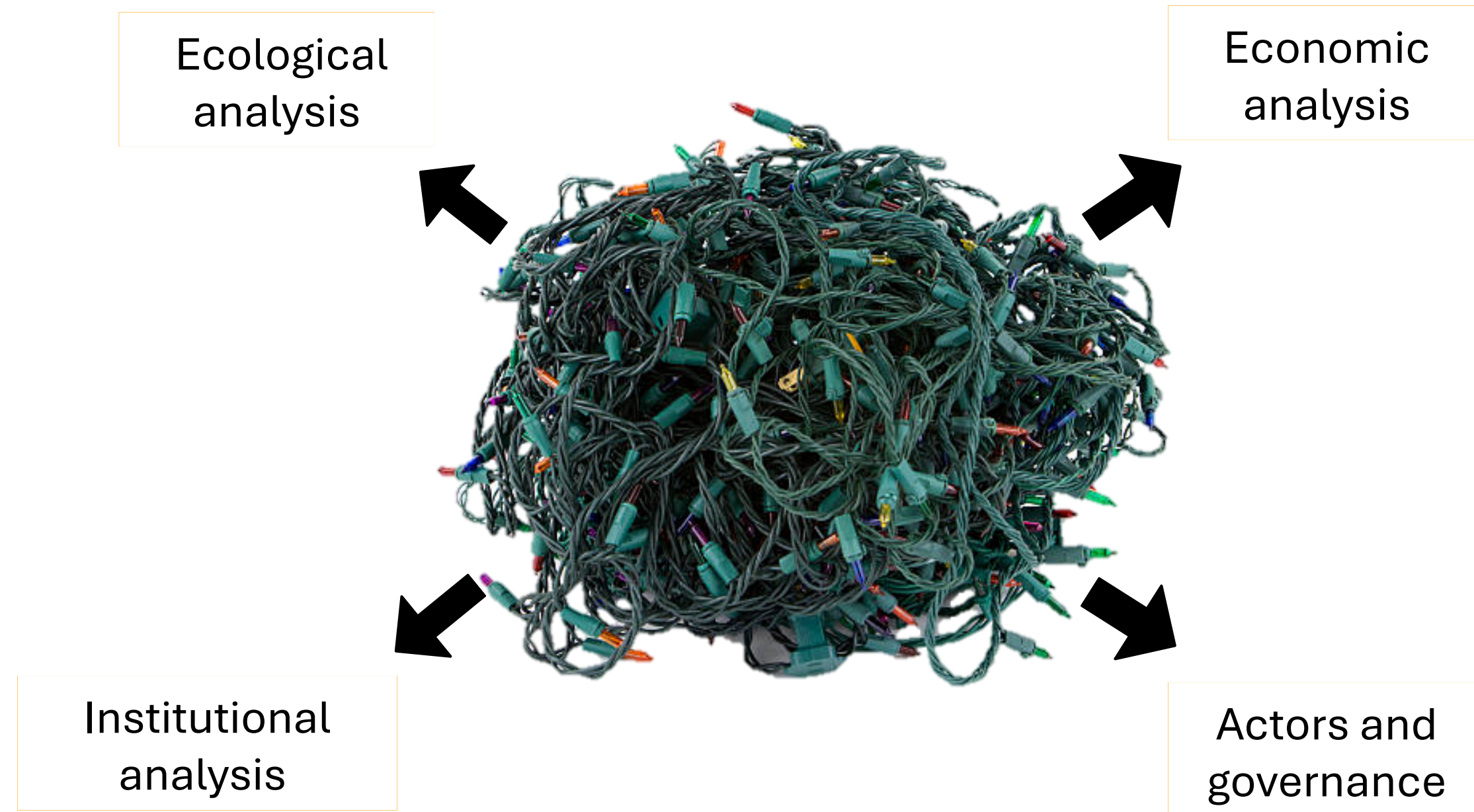
Adapted from *Pirard (2012): Table 1, p.65*

Payment for ecosystem services

- Incentives offered to individuals in exchange for the provision of ES in a voluntary framework
- Main theoretical principles:
 - Voluntary mechanism*
 - Conditionality of payment
 - Additionality of impacts*

Context is crucially important
when designing such a
program

How to develop sustainable and efficient PES-type programs?





FEMMES PRO-FORÊTS



Chaire de recherche du Canada
en économie écologique



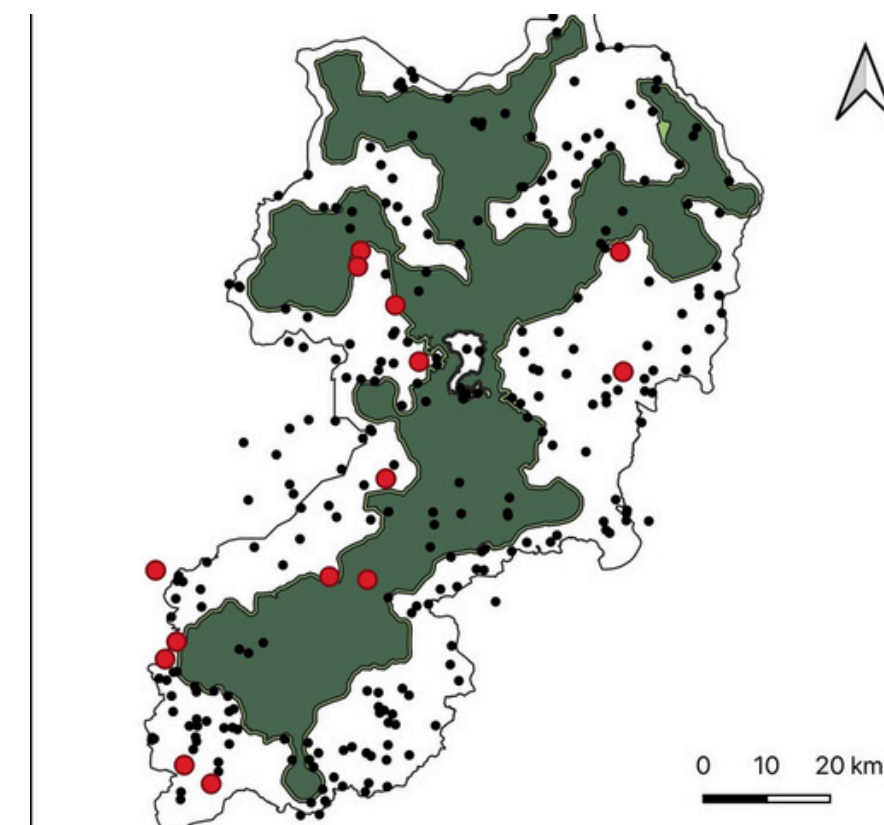
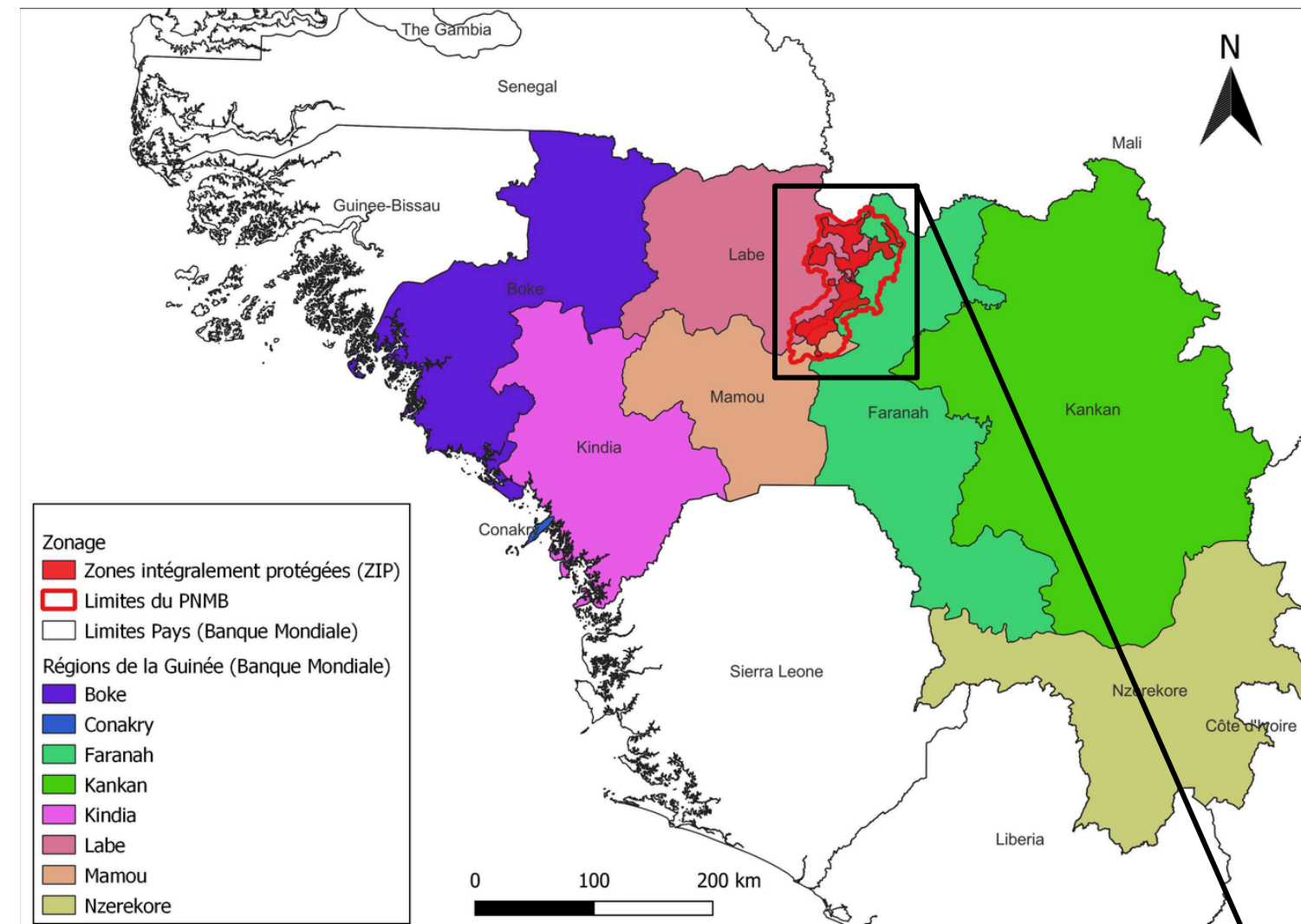
Develop a retribution mechanism

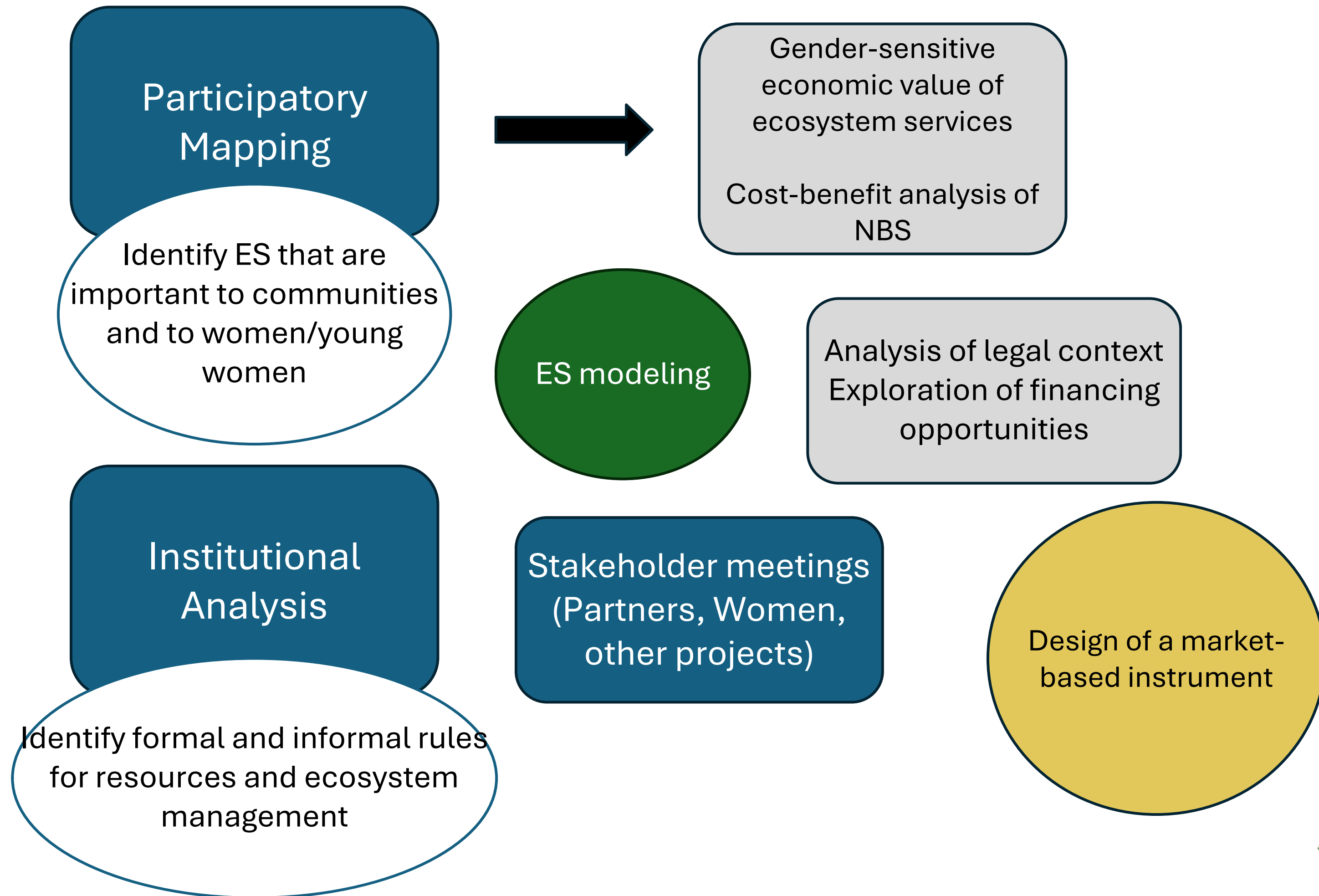
Context:

- The Parc national du Moyen-Bafing, Guinea (2021) is the result of a public-private partnership
- Presence of classified forests (ZIP) and habitat of chimpanzee
- 287 villages, 23 of which are in classified forests

Objectives:

- Improve forest biodiversity;
- Improve livelihoods of women and young women.





Key results : Participatory mapping and institutional analysis

Key roles of women



Garden agriculture mainly performed by women



Gather and transform non-timber forest products (shea, néré and increasingly more honey)



Daily chores to gather water and wood



Limited access to agricultural sites



Most impacted by climate change

Women's activities (incl. garden agriculture, NTFP) are organized in groups

Garden agriculture

29 villages · 2022

82% of TEV

Main activity performed by women
Onion, tomato, gombo...
Constraints : isolation, transport, land

NTFP

Honey & Shea

Significant value

Activity mainly performed by women
Food security
+ revenues

Interviews and stakeholder meeting with women and young women – key results

Causes of deforestation and forest degradation :

- Poverty
- The forest is the ‘source of life’ (agriculture, food, materials, protection, NTFP, firewood)
- Lack of support to adopt new practices

Needs to limits deforestation and forest degradation:

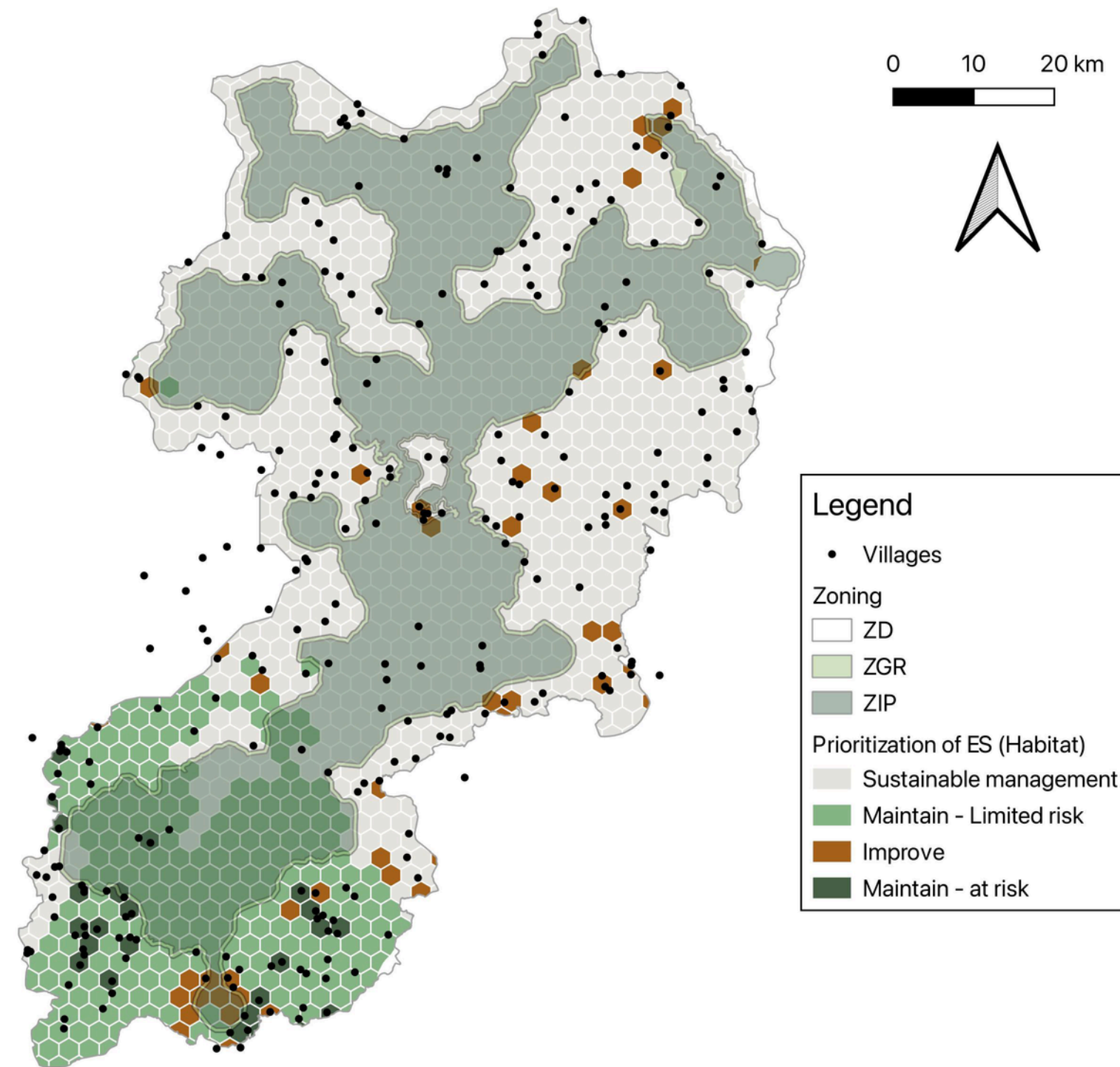
- Conservation, processing and commercialization
- Beekeeping training and support
- Reforestation (to protect NTFP)
 - Strengthen capacity on natural resource management and reforestation
- Support to adopt sustainable agricultural practices
- Fences (protect cultures and pastures)
- Early burning to prevent forest fires

Conditions to implement a program

- Economic: benefits $>$ costs of providing ES
- Cultural: Interest from ES suppliers to take part in a PES*
Conditional to proposed retribution
- Institutional:
 - Mutual trust of stakeholders *Trust of communities in “programs”*
 - Well-defined property rights *To clarify in contracts*
 - Administrative, monitoring, and enforcement capacities. *Choose an organization that is competent, familiar with procedures and accessible to communities*

Other design factors

- Basis of payment : Hybrid – forest cover and needs stated by women
- Spatial scale : Focus on ZGR and ZD + areas where ES can be improved
- Temporal scale : until practices that improve livelihoods have been successfully adopted
- Incentive to suppliers of ES: in-kind (advice, tools)
- Involved parties:
 - Beneficiaries: groups
 - Role of intermediary parties : strengthen capacity and provide technical (agronomic) advice
- Type of funding: TBD
- Contractors: TBD
- Monitoring and evaluation: TBD



Map based on Habitat (2025)

Factors to consider when designing a PES program

- Preconditions : Economic, cultural, institutional
- Objectives of program: Environmental and/or social (e.g.: improve livelihoods, poverty-alleviation, promote gender equity)
- Basis of payment : action-based, results-based, hybrid
- Targeted ES
- Spatial & Temporal scale
- Type of funding: public, private, hybrid, other
- Contractors: public, private, hybrid
- Incentive to suppliers of ES: monetary or in-kind
- Involved contract parties
 - Beneficiaries
 - Role of intermediary parties
- Tenure system
- Monitoring and evaluation

Thank you to the team and partners



Jérôme Dupras, PhD
Titulaire



Julie Lafortune
Directrice



Mohamed Diallo, PhD
Stagiaire postdoctoral



Julie Pelletier
Chercheuse



Bernard Kpanoga Kolombia,
PhD
Stagiaire postdoctoral



Faby Anne Gagné-Mimeault
Doctorante



Lynda Gagné, PhD
Chercheuse



Speakers



Chloé L'Ecuyer-Sauvageau

Researcher
CRCEE
(Moderator)



**Lansana
Hassan Sowa**

Head of Programmes,
Sierra Leone Network on
the Right to Food (SiLNoRF)



Erik Camelos Larrea

Climate Finance
Technical Advisor
GIZ



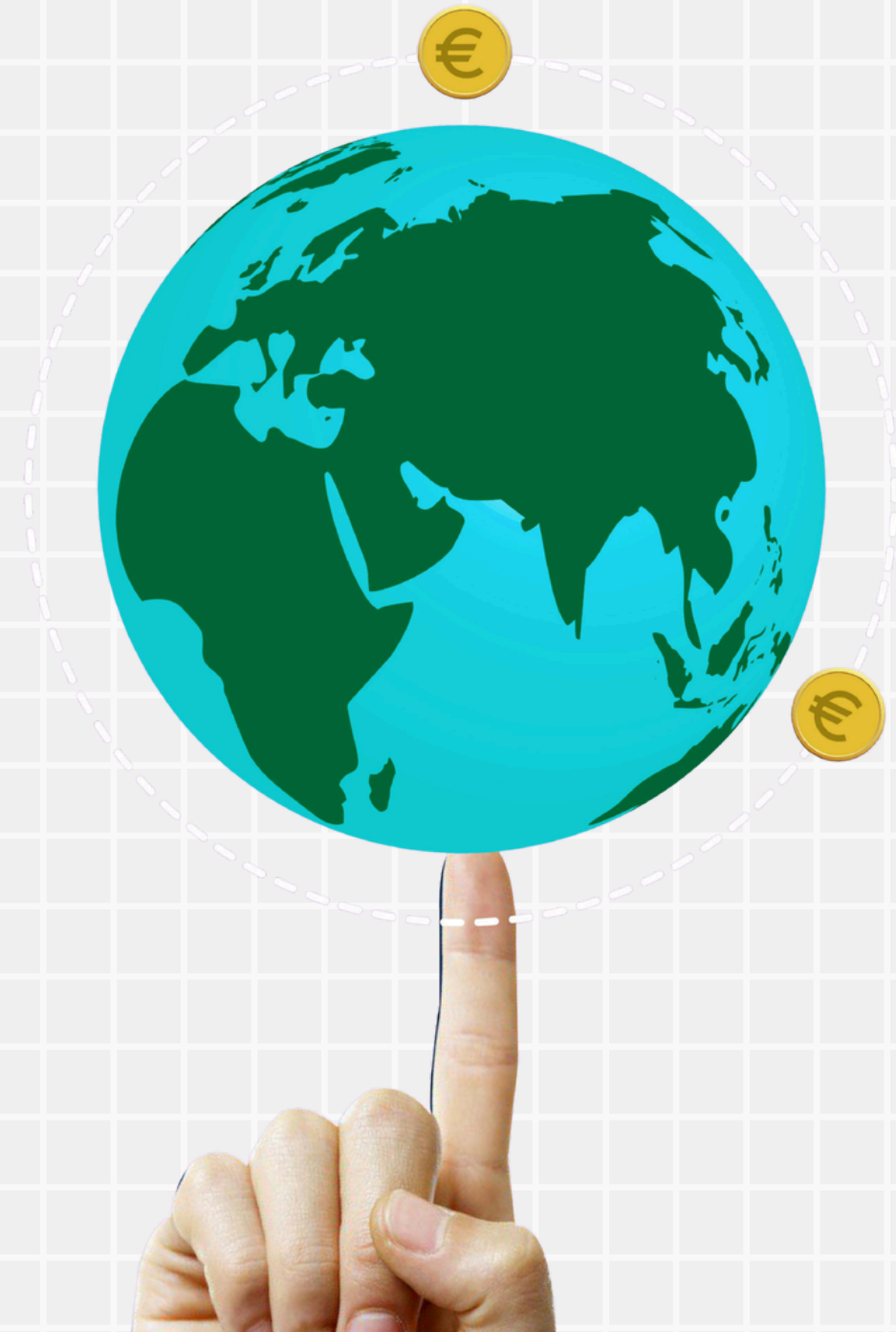
Albert Letting

Senior Policy Advisor for
Sustainable Finance
International Institute for
Sustainable Development



Q&A with participants

9:45– 9:55 EST / 15:45 – 15:55 CET





Leave us your feedback!



Code: 5923 2502
Go to **Menti.com!**





In partnership with
Canada

Thank you!

Contact us

nabsa@iucn.org

